

# CHEF'S LONG TABLE

## Menu

**THE SHELTER BAR**  
\$35 PER PERSON



### 1ST COURSE / ENTREE

*Served as Share platters in middle of the table*

Salt & Pepper Calamari, w roast garlic aioli & fresh lemon

Peking duck spring rolls, w spicy dipping sauce

Pumpkin & sage risotto balls, w lime & jalapeno aioli (V)

### 2ND COURSE / PIZZAS

*Served to share*

#### **Margherita**

cherry tomatoes, sea salt, fresh mozzarella, basil & EVOO (V)

#### **BBQ Sausage**

pork & fennel sausage, kranisky, chorizo, caramelised onion & smokey BBQ sauce

#### **Seafood**

prawns, squid, fish, cherry tomatoes, chilli, garlic oil & lemon

**Served w** Crunchy Mixed Leaf Salad w house dressing

---

### OPTIONAL EXTRAS

*Served to share*

**Variety of Pasta \$8PP**

**Petite Sweets \$9PP**

**Cheese Plates \$9PP**

Chef's selection of the finest cheeses



# CHEF'S LONG TABLE

## Menu

THE SHELTER BAR

\$45 PER PERSON



### 1ST COURSE / ENTREE

*Served as Share platters in middle of the table*

Garlic & mozzarella pizza bread

Salt & Pepper Calamari, w roast garlic aioli & fresh lemon

Natural oysters, freshly shucked w tabasco & fresh lemon (GF)

### 2ND COURSE / MAINS

*Served alternately*

#### **250g Eye Fillet**

w creamy mash & greens

#### **Beer Battered Fish & Chips**

w garden salad, chips, lemon & caper mayo

---

### OPTIONAL EXTRAS

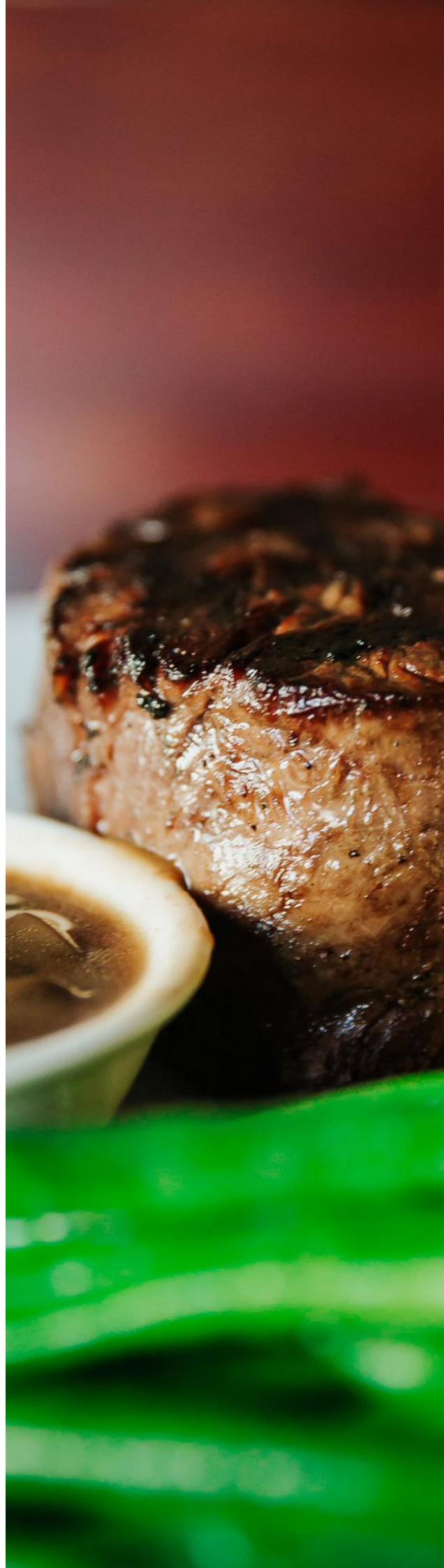
*Served to share*

**Variety of Pasta \$8PP**

**Petite Sweets \$9PP**

**Cheese Plates \$9PP**

Chef's selection of the finest cheeses



# CHEF'S LONG TABLE

## Menu

**THE SHELTER BAR**  
\$48 PER PERSON



### 1ST COURSE / ENTREE

*Served as Share platters in middle of the table*

Garlic & mozzarella pizza bread

Chicken karaage bowls w tonkatsu sauce

Spicy pork san choy bau w crisp lettuce cups

### 2ND COURSE / MAINS

*Served to share*

#### **Barcoo Rib Fillet**

14hr slow roasted whole rib fillet carved to order

#### **Served w sides to share**

Wagyu roasted chats

Mixed leaf salads

Honey-glazed carrots

Steamed seasonal greens

Red wine jus & mustards/condiments

### OPTIONAL EXTRAS

*Served to share*

**Variety of Pasta \$8PP**

**Petite Sweets \$9PP**

**Cheese Plates \$9PP**

Chef's selection of the finest cheeses

